

## Shutting Down the Printer

You only need to shut down the Objet printer if it will not be used for a week or more. Otherwise, the printer can remain on, in *Idle* mode.



The Shutdown process flushes printing materials from printer components. To avoid flushing out valuable material, make sure to print models at least once a week. Many printer operators use this opportunity to print customer samples or test models.

To properly shut down, the printer needs to perform several processes. **Do not attempt to shut down the printer by simply closing the computer interface (the printer-control application), and never disconnect power to the printer before completing the Shutdown Wizard.**

- **Shutdown for Less Than One Week**

Before shutting down the printer or the printer computer for less than one week, run the **Shutdown Wizard**. This wizard clears the print heads of printing materials before shutdown.

- **Shutdown for One Week or More**

Before shutting down the printer or the printer computer for one week or more, first run the **Material Flush/Fill Wizard**. This wizard replaces printing materials in the print block with cleaning fluid. Then, run the **Shutdown Wizard** to complete the shutdown process.

**Note:** After preparing the printer with the Material Flush/Fill Wizard, you must run it again before printing models, this time to replace the cleaning fluid in the print block with printing materials.)

### Shutdown Wizard

To run the Shutdown Wizard:

1. Select **Shutdown Wizard** from the *Options* menu, or press **F8**.



Figure 6-18: Shutdown Wizard, opening dialog box

2. In the opening wizard screen, click **Next**.

**Note:** *Run wizard manually* is selected by default. It is recommended that you do not change this selection, to have more control over the shutdown process. If you select *Run wizard unattended*, the shutdown process may take longer, and the wizard will automatically shut down the printer computer.

3. In the next screen, indicate whether or not the tray is empty and click **Next**.

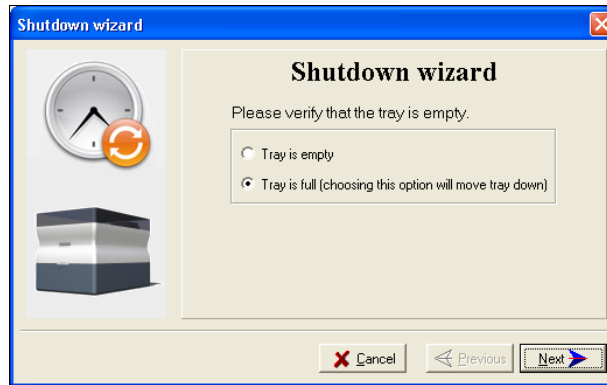


Figure 6-19: Tray status screen

The shutdown procedure begins.

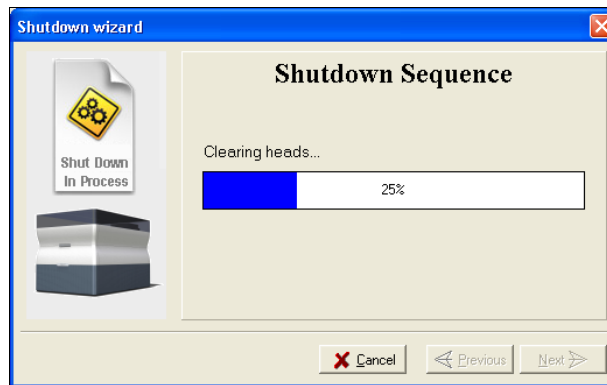


Figure 6-20: Shutdown progress screen

The shutdown procedure may take up to 10 minutes while the following tasks are performed:

- a. The print block returns to its starting point on all axes.
- b. The print heads are heated.
- c. The print heads are cleared of any remaining material.

After these tasks are completed, the final wizard dialog box appears, in which you choose whether or not to shut down the computer in the Objet printer at this time.

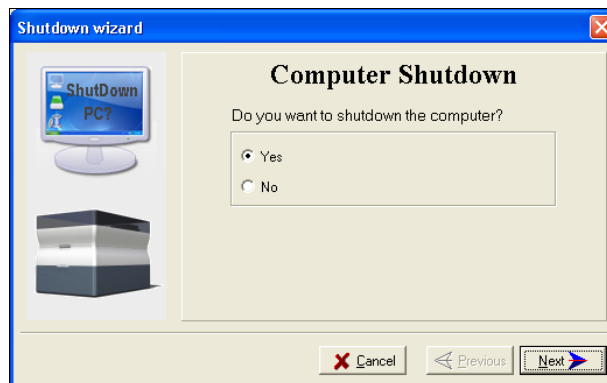


Figure 6-21: *Computer Shutdown* confirmation dialog box

## Material Flush/Fill Wizard

4. When completely shutting down the Objet printer and turning the power off, select **Yes** and click **Next**.
5. After the printer computer shuts down, turn off the main power switch at the back of the printer (see figure 6-2 on page 2).

You use this wizard to prepare the printer for a shutdown of more than one week, and to restore the printer to working condition.

- To prepare the printer for an extended shutdown, the wizard drains printing materials from the print heads, then flushes the system with cleaning fluid. This process takes about 60 minutes.

For this procedure, you need to load four (4) cleaning-fluid cartridges in the cartridge drawer.

- To restore the printer to working condition, the wizard fills the system with printing materials. This process takes about 30 minutes.

For this procedure, you need to load two (2) cartridges of model material and two (2) cartridges of support material.

To run the Material Flush/Fill Wizard:

1. Select **Material Flush/Fill Wizard** from the *Options* menu.
2. In the opening screen, click **Next**.

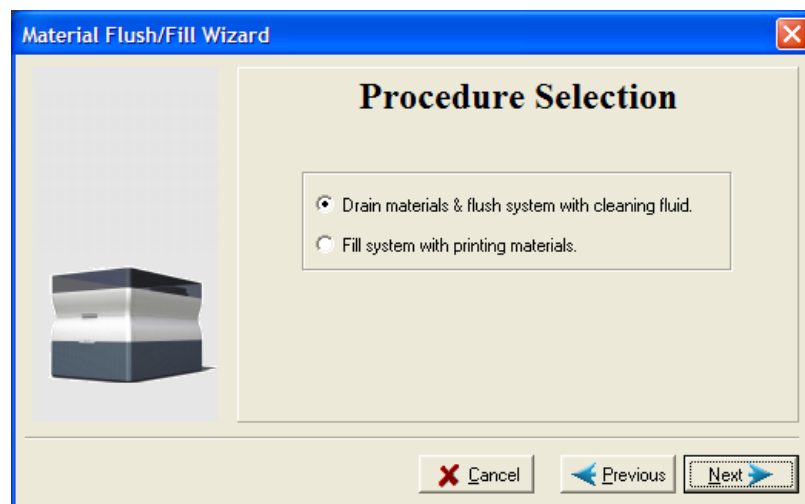
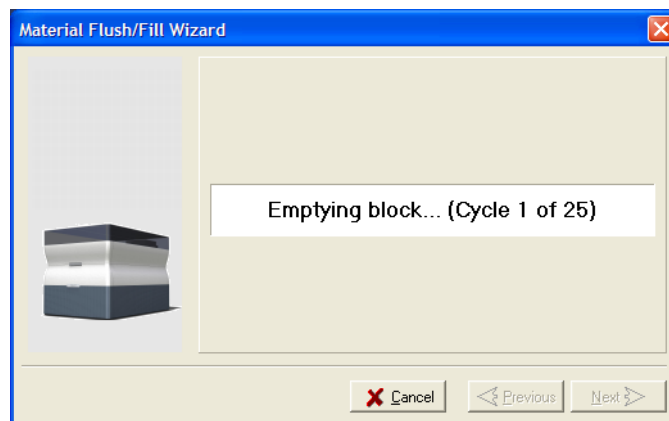
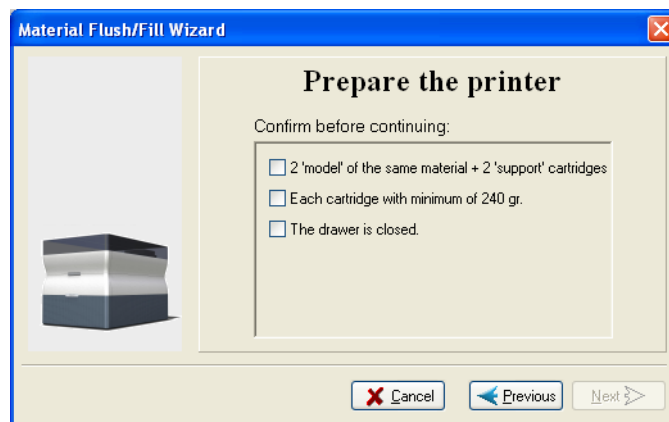


Figure 6-22: Wizard procedure selection

3. Select the required procedure, and click **Next**.

**Note:** Before continuing, make sure the required cartridges of material are available for the procedure selected.



6. If cleaning-fluid cartridges are loaded in the printer, the wizard prompts you to remove them. Confirm this in the wizard screen, and click **Next**.

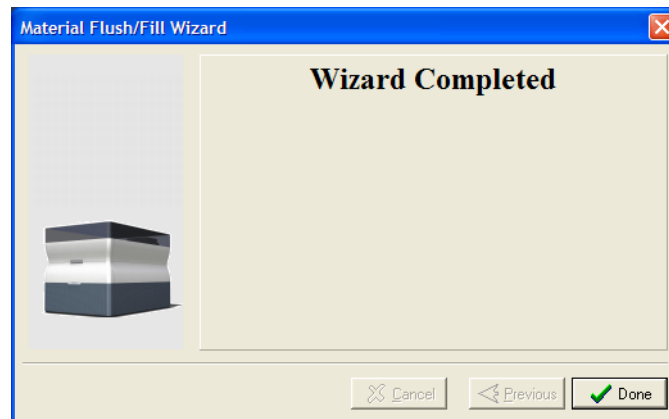


Figure 6-26: Final wizard screen

**Note:** After preparing the printer for an extended shutdown period with this wizard, run the Shutdown Wizard to complete the shutdown process.